



Castleview Gardens Ilford, IG1 3QF

Edward Chase are proud to be presenting this excellent two bedroom maisonette located within a short walk to Redbridge Tube Station and is surrounded by great local amenities. The property is in excellent condition throughout and comes with grey laminate flooring on the ground floor as well as modern and stylish doors which all add to the property's charm. The property is empty now, call Edward Chase now to attend the next available viewing. Property key features; - 2 bedroom maisonette - Large reception area - Separate kitchen - White goods - Part-furnished - First floor bedrooms - Bathroom - Gas central heating - Double glazed - Excellent condition - High-end fixtures and fittings - Walking distance to Redbridge Tube Station - Surrounded by local amenities - Available now Call Edward Chase now to attend the next available viewing. Lettings Edward Chase estate agents offer a bespoke, professional, ARLA accredited Lettings &

- A Two Bedroom Maisonette Which is Within Close Walking Distance to Redbridge Tube Station
- Excellent Condition Throughout With Grey Laminate Flooring and Stylish Modern Doors
- The Property is Provided Part-Furnished
- You Will Find a Separate Kitchen Which is Off the Spacious Reception Area
- Located Within a Quiet Residential Area Making It a Perfect Place to Relax After Work
- Tube Access to Central London via the Central Line (24 hour service on weekends)

Monthly Rental Of £1,199

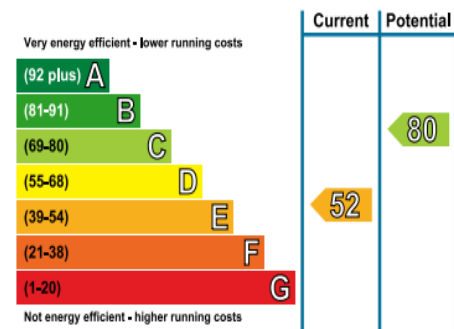
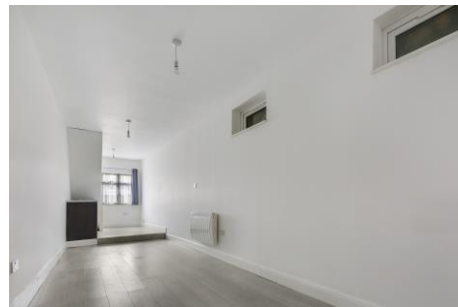
Castleview Gardens

Ilford, IG1 3QF

Monthly Rental Of £1,199

Edward Chase are proud to be presenting this excellent two bedroom maisonette located within a short walk to Redbridge Tube Station and is surrounded by great local amenities. The property is in excellent condition throughout and comes with grey laminate flooring on the ground floor as well as modern and stylish doors which all add to the property's charm. The property is empty now, call Edward Chase now to attend the next available viewing. Property key features; - 2 bedroom maisonette - Large reception area - Separate kitchen - White goods - Part-furnished - First floor bedrooms - Bathroom - Gas central heating - Double glazed - Excellent condition - High-end fixtures and fittings - Walking distance to Redbridge Tube Station - Surrounded by local amenities - Available now Call Edward Chase now to attend the next available viewing. Lettings Edward Chase estate agents offer a bespoke, professional, ARLA accredited Lettings & Management service. If you would like a free appraisal to gauge

the rental potential of your property or you are considering a buy to let purchase, please feel free to contact Sukhbir Basra, Branch Manager to arrange an appointment. A tenant referencing fee of £195 per person will be charged subject to a minimum fee of £500 per property. All fees are inclusive of VAT.



MONEY LAUNDERING REGULATIONS 2003

Intending purchasers will be asked to produce identification and proof of financial status when an offer is received. We would ask for your co-operation in order that there will be no delay in agreeing the sale.